

SARGENT FFA



OCTOBER 2022

NEWSLETTER

www.sargentffa.com



IN THIS ISSUE

- Meet Our Officers
- Colorado Ag News
- Ag Fun
- Member Spotlight
- FFA Fundraisers
- FFA Wishlist
- Ag Events
- Pictures
- Sargent Alumni/spporters group
- FFA Sponsors



Follow us at:

Instagram: [sargent_ffa](https://www.instagram.com/sargent_ffa)

Facebook: Sargent FFA

Any questions please email:
sschaller@sargent.k12.co.us

FFA Fun Fact

There are over 8,600 FFA chapters operating in all 50 States!

By: Lane Spearman



MEET OUR OFFICERS

By: AJ Garcia



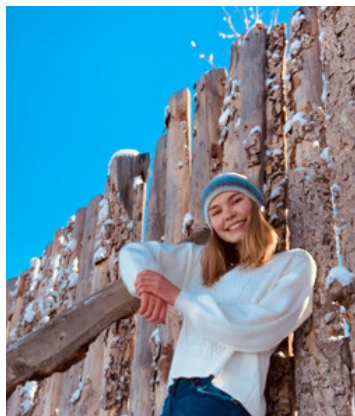
October 2023

AJ Garcia
Megan Peterson
Annabelle Heineman
Westen Burkhart
Bryleigh Fuller
Ellaree Rockey
Jessica Buser
Burke Temple

President
Vice President
Secretary
Treasurer
Reporter
Sentinel
Parliamentarian
Executive Committee



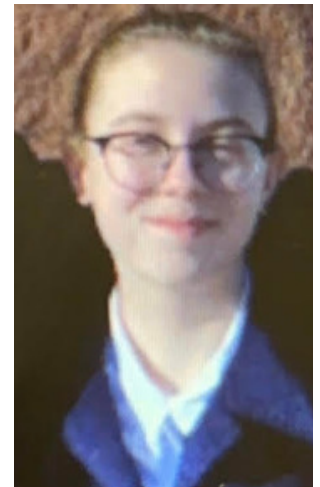
AJ Garcia



Annabelle Heineman



Bryleigh Fuller



Jessica Buser



Megan Peterson



Westen Burkhart



Ellaree Rockey



Burke Temple



2022 HAY DIRECTORY

By: KayleeAnn Martinez

Recently the Department of Agriculture announced that the 2022 Hay Directory is now available. This Directory makes it easier for ranchers to identify different types of grasses as long as it is on their land. The directory provides valuable information to the purchasers. The information included hay types that are available, bale types and sizes, if it's laboratory analysis available, if it's certified weed-free status, and if it's organic. This directory will be even more valuable in times of drought. This is the 31st version of the directory.

Article link: <https://www.nbc11news.com/2022/08/22/colorado-hay-directory-now-available/>



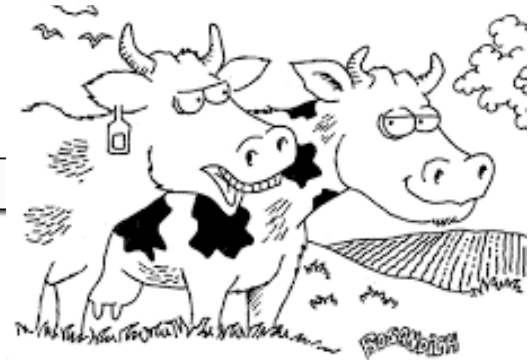
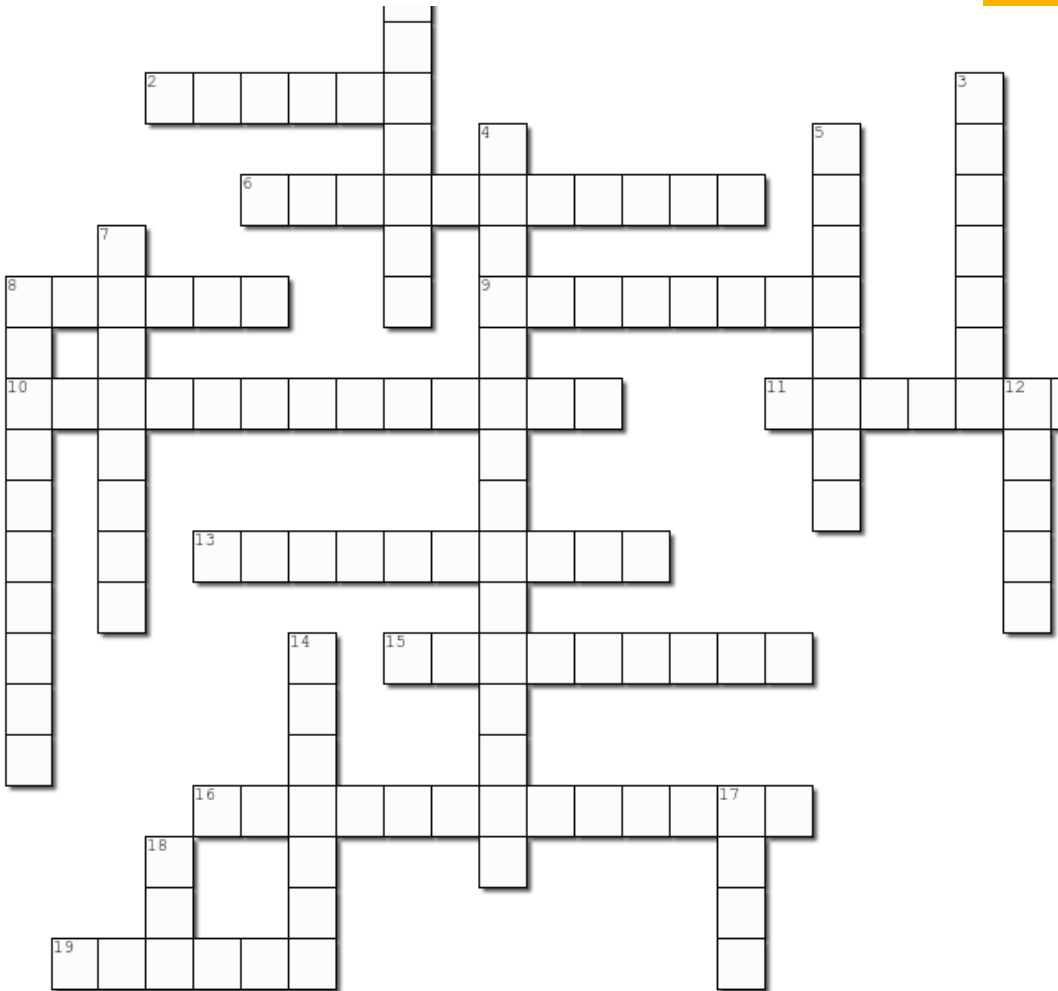
AG FUN



AG CROSSWORD

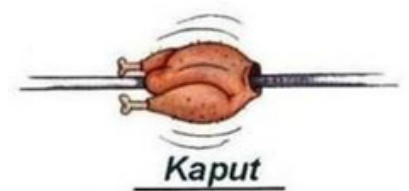
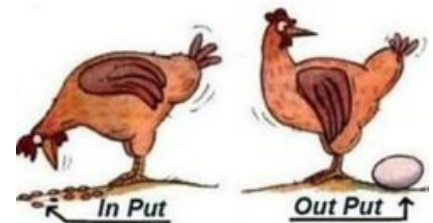
BY: MEGAN PETERSON

UTTERLY GREAT COMEDY



"I'd really appreciate it if you'd quit calling me 'Big Mac'."

Chicken Lifestyle



Cross

2. Type of grain that is mainly harvested for beer
6. the science or practice of farming, including cultivation of the soil for the growing of crops and the rearing of animals to
8. A large variety of fruit that had a hard skin and seeds inside, a pumpkin is part of this family
9. a starchy plant which is one of the most important food crops used to make french fries
10. The action of harvesting apples from an orchid
11. Time in fall when you collect the crops you have been growing
13. Candy that is very popular during Halloween is shaped like a corn kernal
15. Where corn is grown
16. Where you a get pumpkins from

Created using the Crossword Maker on TheTeachersCorner.net

Down

1. A ride taken in a wagon that has hay in it
3. Machine used to harvest grain or seed crops
4. Pumpkins displayed during Halloween that have faces carved into them
5. Packed pile of hay usually in a stack
7. Orange crops that you can carve
8. Place where you store grain
12. Things you plant in the ground to grow something
14. People who work on and own farms
17. Large animals that produce beef
18. A youth organization used to be known as Future Farmers of America

MEMBER SPOTLIGHT



OCTOBER 2022

By: Westen Burkhart



Cooper Gosar

Year: Sophomore

CDE: Meat Evaluation

Cooper Gosar is our FFA member of the month. He shows great leadership and is very active in our chapter. He is willing to help wherever is needed, and loves being a part of FFA.

Cooper joined FFA because agriculture has always been a big part of his life and this was a way to become more involved.

FFA has taught Cooper very important lessons about agriculture and valuable skills he can use later in life.

Cooper participates in meat evaluation for our chapter CDE's competition. He said that he chose this because his family business produces sausage and he is very interested in the different types of meat so he wanted to learn more about it. We appreciate Cooper's involvement in our chapter and are excited to see what he accomplishes in the next three years.

FFA

FUNDRAISERS



OCTOBER 2022



Trailer:

We are currently trying to sell a trailer made by the Sargent Ag/Shop class in 2021. The trailer is a ball hitch, single axle and is 10 Feet long.

Taking reasonable offers

-Contact us for info and images.

Sargent

FFA Hats:

Sargent FFA hats are Richardson snapback mesh back trucker style.

\$25 a piece.

Hats will be sold until inventory is empty



If you have any questions or are interested in either, please contact a Sargent FFA member or email us at sschaller@sargent.k12.co.us

By; Annabelle
Heineman

October 2022

FFA WISHLIST

By: Annabelle Heineman



The Sargent FFA/Ag Program is in need of donations. If you would be interested in donating, we have included a list of ideas below:

WOOD SHOP

- Pliers
 - Slip-Joint
 - Locking Pliers
 - Needle Nose
- Nails
- Screws
- Screw Drivers
 - Philips
 - Flat Head
- Drill Bits (Kit)
- DeWalt Batteries
- Lumber
 - Scrap Wood
 - Table Saw Blades

WELDING

- Electrodes
- Electrical Tools
- Angle Grinders
- Sanders
- Disc
- Orbital
- Body Saws
- Table Saws
- Nail Gun+Nails
- Wire Brushes

GENERAL AG CLASSROOM

- Ag Magazines
- Newspapers

If you are interested in donating your time to help with CDE coaching, fundraising, or community service, etc. Please contact our advisor, Sarah Schaller at sschaller@sargent.k12.co.us.

AG EVENTS

Potato Festival



Potato Dunk Tank



Potato Salad

On September 10th, 2022 the Sargent FFA Chapter ran a booth in which we helped kids decorate potatoes. This activity allowed kids to ask questions about potatoes while interacting with an agricultural organization.



Riding Tricycles

While at the Potato Festival Sargent FFA members participated in additional fun activities such as: bouncy house race, potato dunk tank, tricycles, rock climbing, and trampolines.

AG EVENTS



BIG Conference and District Officer Interviews

On September 27, 2022 first year Sargent FFA members attended the BIG Conference put on by Colorado FFA State Officers at Centauri High School. Sargent FFA Officers Westen Burkhart and Ellaree Rockey also traveled to interview for District Officer positions.



District IV Officer Team



Mitchell Peterson and Corbin Castillo participate in workshops

The purpose of the BIG Conference is to introduce agricultural education to first year students involved in FFA. These students participate in various workshops in which they interacted with other first year FFA members while learning about FFA.



2022 BIG Conference attendees

District IV Officer Results

Westen Burkhart District IV Treasurer
Ellaree Rockey: District IV Reporter

AG EVENTS

District IV Rangeland Judging and Workshop

On September 21, 2021 five Sargent FFA members attended a Range Judging Workshop hosted by Sangre FFA, at Berlinger Farms.

This workshop was helped attendees identify key traits of healthy rangelands in the San Luis Valley. The contest tested students ability to determine rangeland conditions and identify a variety of native plants.



Salt Flats Ecological Site



Trenton Paskett and Mitchell Peterson

At the end of the day Sargent FFA Chapter recieved a first place team score. Freshman Mitchell Peterson placed silver. Junior Trenton Paskett placed gold, and was the highest scoring individual.

PICTURES

October 2022

By: Megan Peterson



**SOME OF OUR MEMBERS
AT THE POTATO FESTIVAL**

**BYRLEIGH FULLER EATING
A PIE AT LOGGER DAYS**



**FFA MEMBERS WITH FFA STATE
PRESIDENT AT BIG CONFERENCE**



FFA MEMBERS AT BIG CONFERENCE



**FFA MEMBERS AT THE PIE
EATING CONTEST AT
LOGGER DAYS**



**COOPER GOSAR
EATING A PIE AT
LOGGER DAYS**



**MITCHELL PETERSON
AND CORBIN CASTILLO
AT THE BIG
CONFERENCE**



**CADYN WRIGHT,
JAYCE CAPRON, AND
BRAXTON REGISTER
AT BIG CONFERENCE**



**FFA MEMBERS AT THE
SACK RACE AT LOGGER
DAYS**

SARGENT ALUMNI/SUPPORTERS GROUP



**Sargent FFA Alumni and Supporters Group was chartered May 2022. This group was founded to help support Sargent FFA in an organized and professional way. The group allows supporters to offer time, support, and encouragement to the members of the chapter. Meetings are held the first Wednesday of every month. Next meeting will be in Novmeber. Anyone who is interested is welcome to attend. If there are any questions, please feel free to reach out by email to:
sschaller@sargent.k12.co.us**



FFA SPONSORS



By: Jesse Pescatore



SHOUT OUT TO OUR FFA SPONSORS

- SLV QUALITY CONCRETE LLC.
- C SQUARED ELECTRIC INC.
- SAN LUIS VALLEY BEHAVIORAL GROUP
- YETTI THREE SERVICE INC
- FARM BUERO INSURANCE
- C&L CONTAINER COMPANY
- CENTRAL PUMP COMPANY
- FULLER ELECTRIC INC
- KYFFIN ENTERPRISES LLC
- MITCHELL FARMS
- LK RANCH
- KYFFIN ENTERPRISES LLC
- MITCHELL FARMS
- LK RANCH
- MONTE VISTA COOP
- FORNEY
- RIVER BED RESORT
- CPAC
- FARM BUERO
- BILL SHUE

